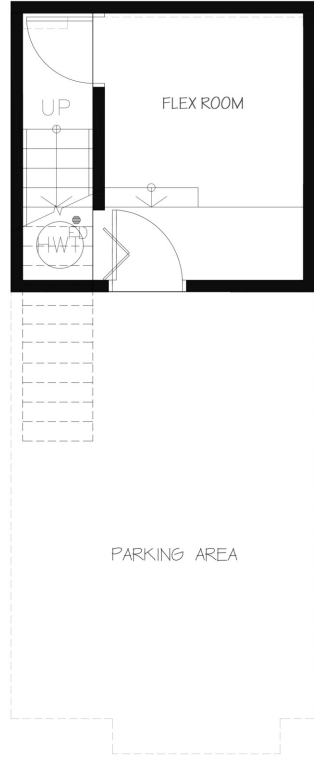
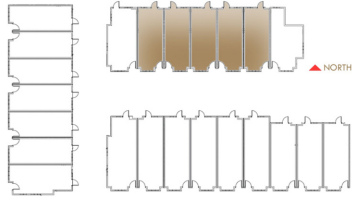
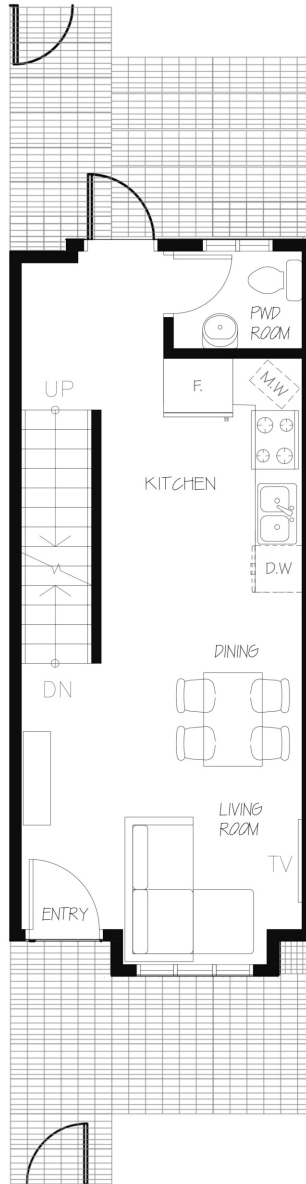




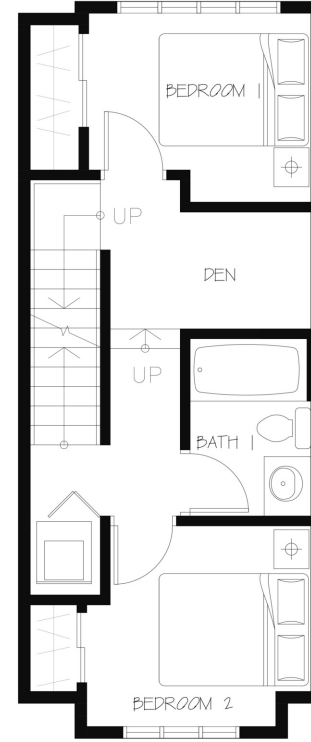
HIGHGATE HOMES
THE HEART OF HIGHGATE



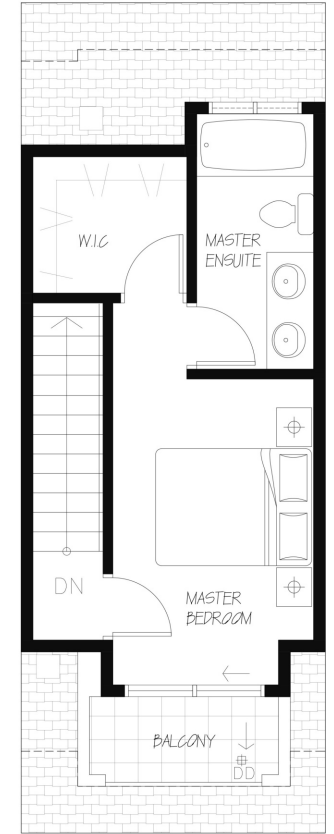
BASEMENT



FIRST FLOOR



SECOND FLOOR



THIRD FLOOR

TYPE

A₁

3 BEDROOM + DEN + 2.5 BATHROOM

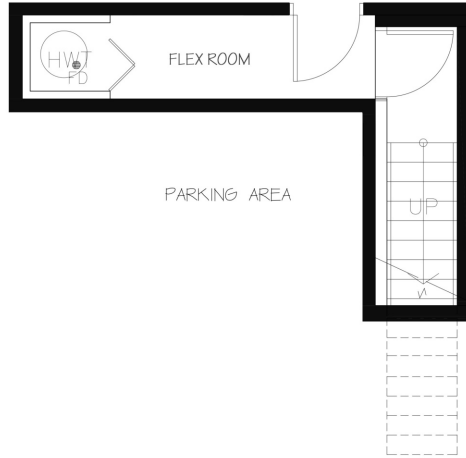
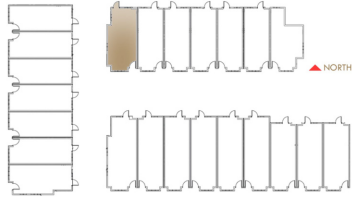
INDOOR : 1280 - 1460 SQ.FT

OUTDOOR : 294 - 381 SQ.FT

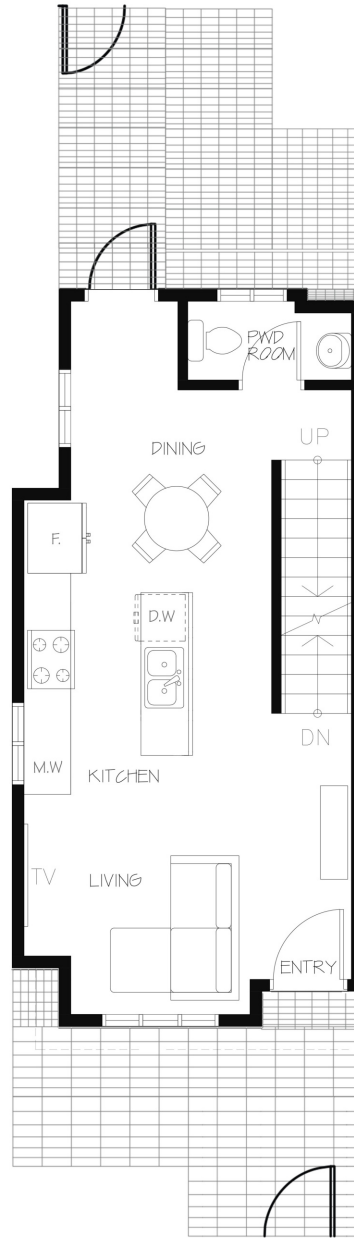
TOTAL : 1574 - 1754 SQ.FT



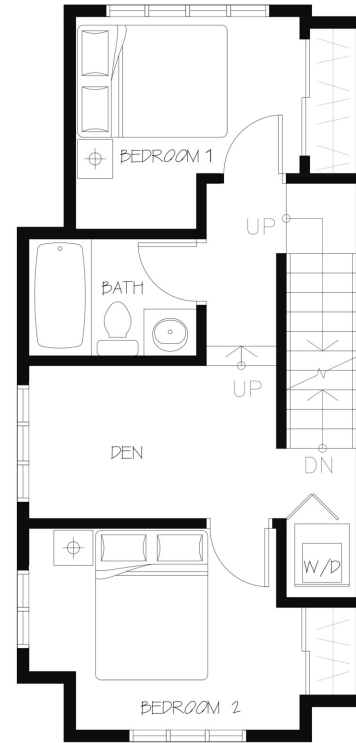
HIGHGATE HOMES
THE HEART OF HIGHGATE



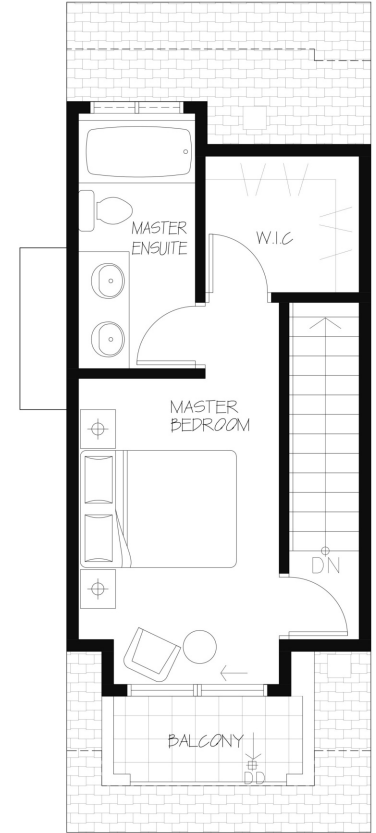
BASEMENT



FIRST FLOOR



SECOND FLOOR



THIRD FLOOR

TYPE

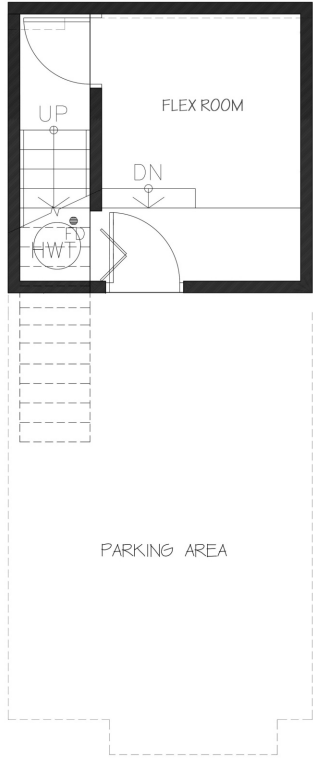
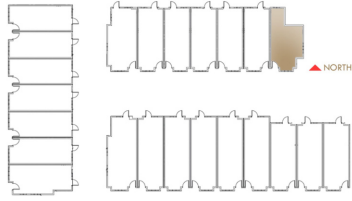
A₂

3 BEDROOM + DEN + 2.5 BATHROOM

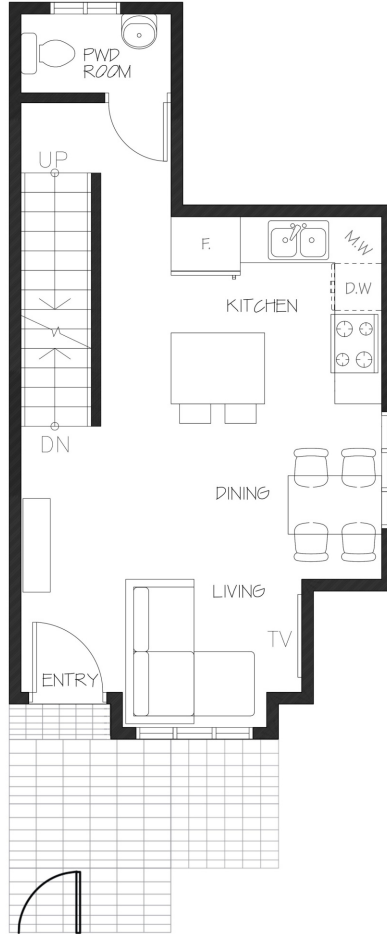
INDOOR : 1322 SQ.FT
OUTDOOR : 430 SQ.FT
TOTAL : 1752 SQ.FT



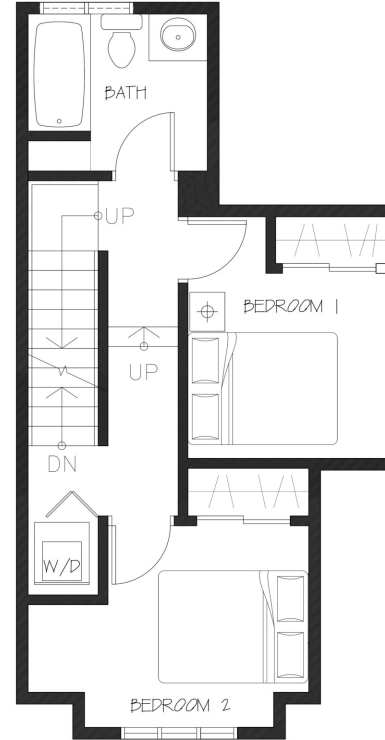
HIGHGATE HOMES
THE HEART OF HIGHGATE



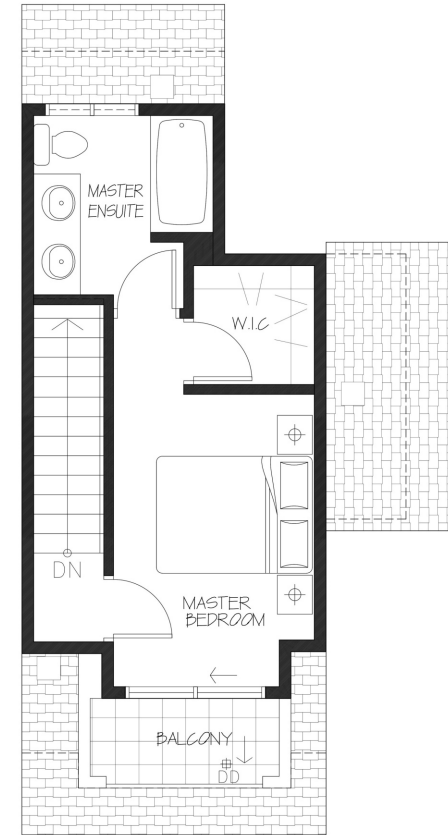
BASEMENT



FIRST FLOOR



SECOND FLOOR



THIRD FLOOR

TYPE

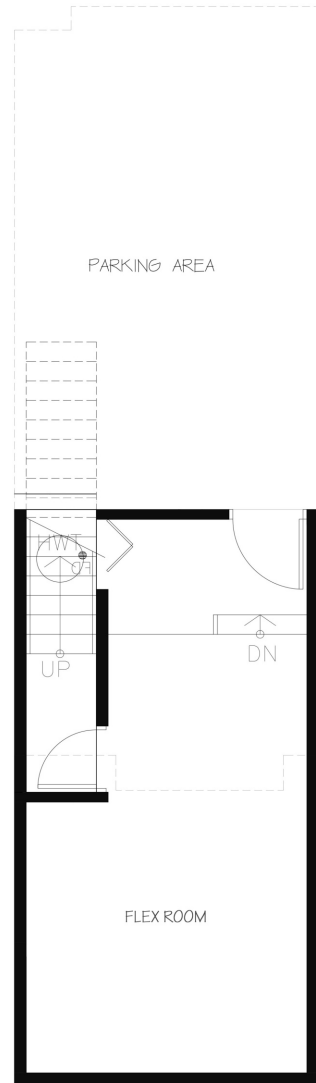
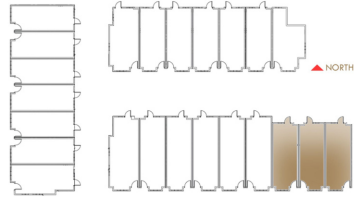
A₃

3 BEDROOM + 2.5 BATHROOM

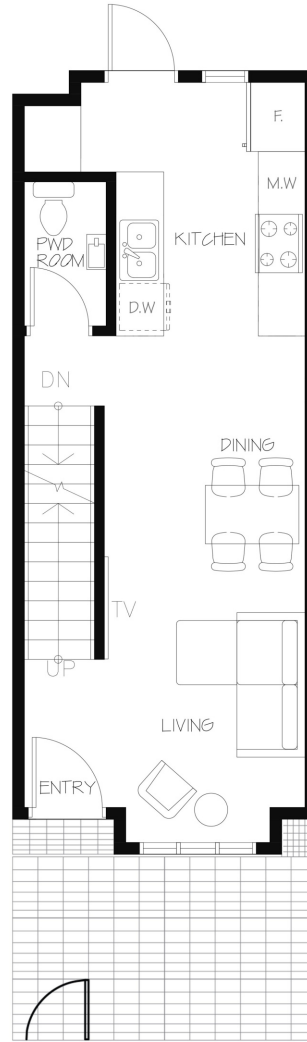
INDOOR : 1277 SQ.FT
OUTDOOR : 182 SQ.FT
TOTAL : 1459 SQ.FT



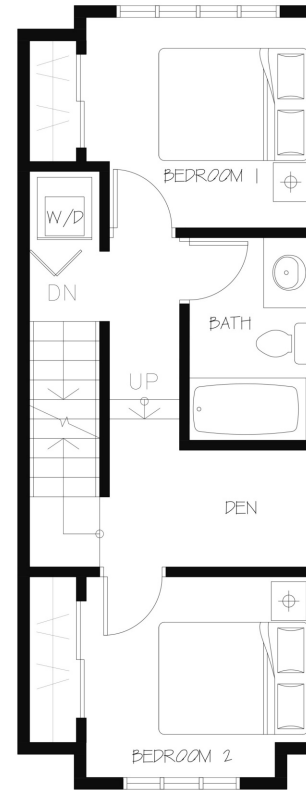
HIGHGATE HOMES
THE HEART OF HIGHGATE



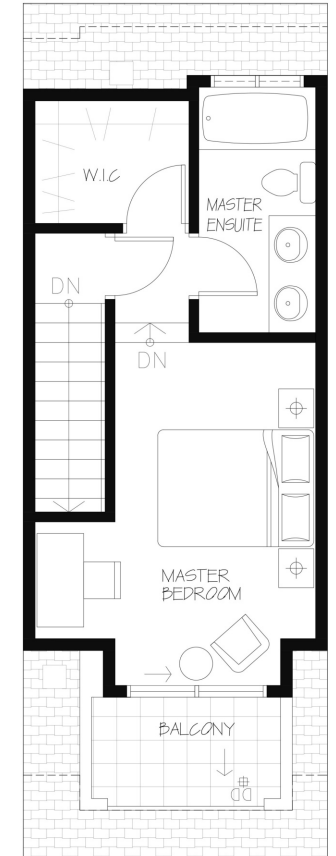
BASEMENT



FIRST FLOOR



SECOND FLOOR



THIRD FLOOR

TYPE

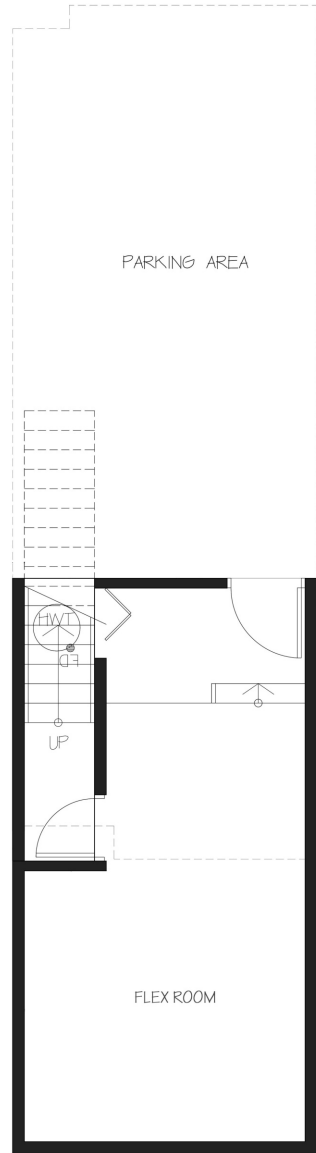
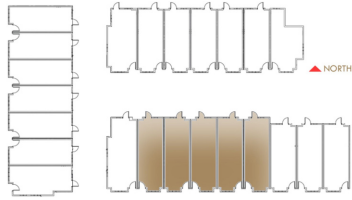
B₁

3 BEDROOM + DEN + 2.5 BATHROOM

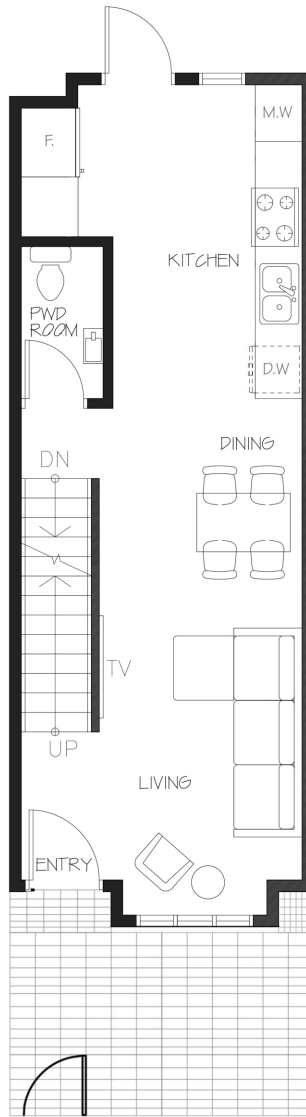
INDOOR : 1520 SQ.FT
OUTDOOR : 249 - 311 SQ.FT
TOTAL : 1769 - 1831 SQ.FT



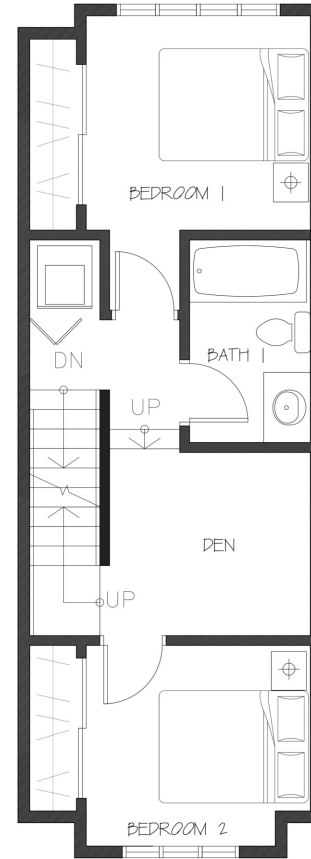
HIGHGATE HOMES
THE HEART OF HIGHGATE



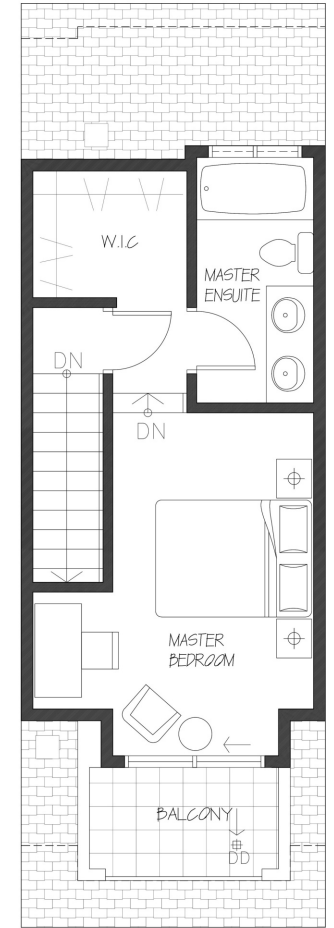
BASEMENT



FIRST FLOOR



SECOND FLOOR



THIRD FLOOR

TYPE

B₂

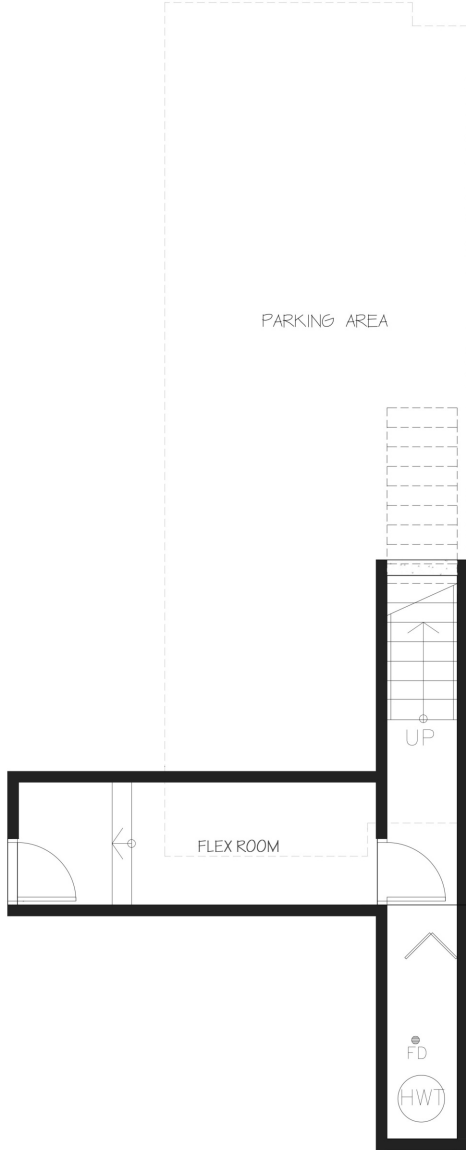
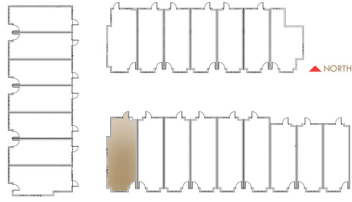
3 BEDROOM + DEN + 2.5 BATHROOM

INDOOR : 1598 SQ.FT
OUTDOOR : 272 SQ.FT
TOTAL : 1870 SQ.FT

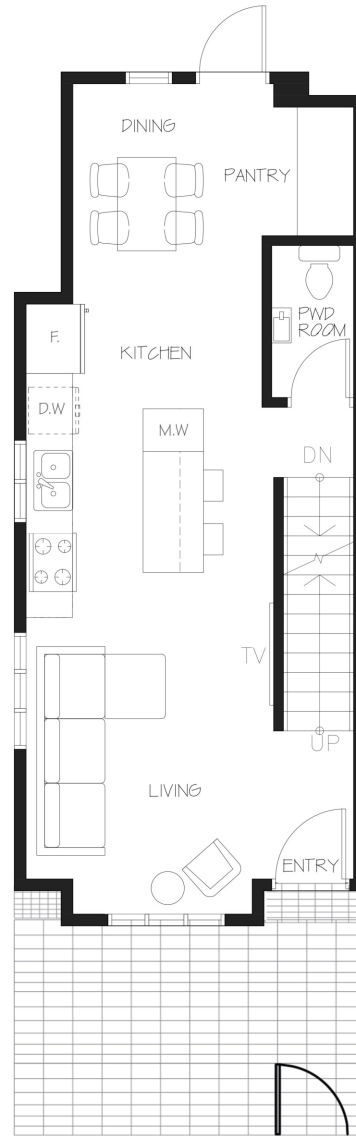
DEVELOPER RESERVES THE RIGHT TO MAKE CHANGES AND MODIFICATIONS OR SUBSTITUTIONS TO THE BUILDING DESIGN, SIZES, AREAS, SPECIFICATIONS, LAYOUT, MATERIALS, AND PRICES WITHOUT THE NOTICE. THIS IS NOT AN OFFERING FOR SALE. ANY SUCH OFFERING CAN ONLY BE MADE BY WAY OF DISCLOSURE STATEMENT.



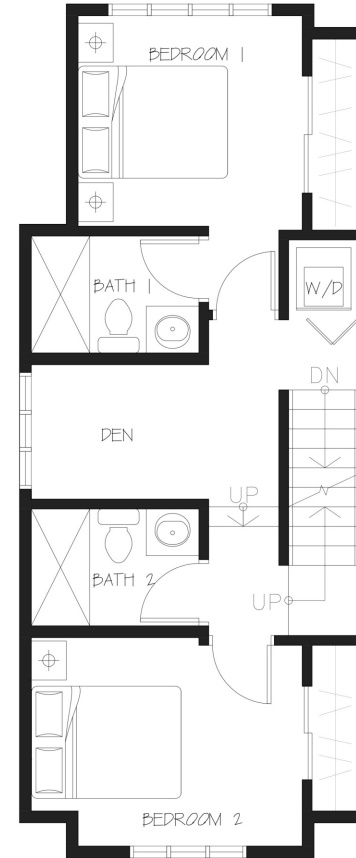
HIGHGATE HOMES
THE HEART OF HIGHGATE



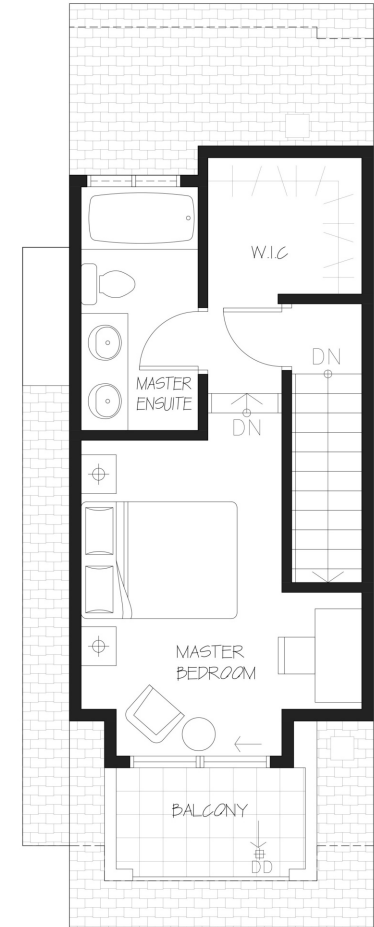
BASEMENT



FIRST FLOOR



SECOND FLOOR



THIRD FLOOR

TYPE

B₃

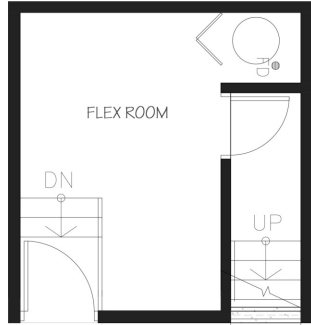
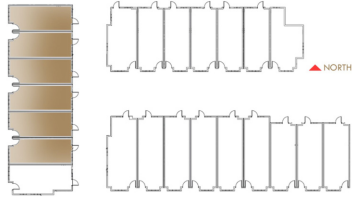
3 BEDROOM + DEN + 3.5 BATHROOM

INDOOR : 1585 SQ.FT
OUTDOOR : 321 SQ.FT
TOTAL : 1906 SQ.FT

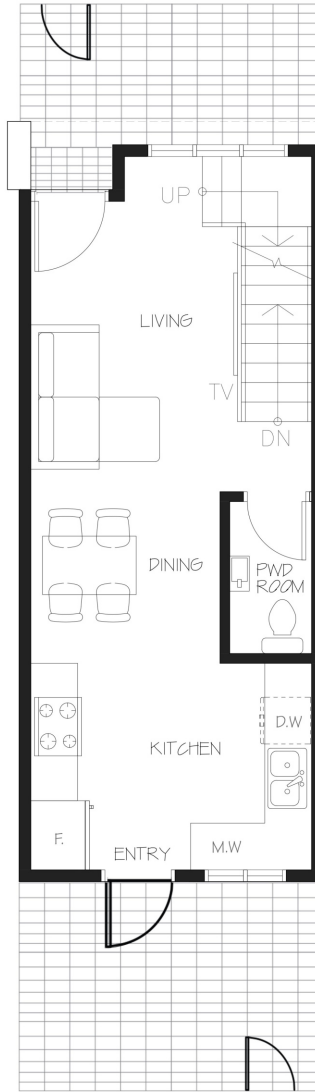
DEVELOPER RESERVES THE RIGHT TO MAKE CHANGES AND MODIFICATIONS OR SUBSTITUTIONS TO THE BUILDING DESIGN, SIZES, AREAS, SPECIFICATIONS, LAYOUT, MATERIALS, AND PRICES WITHOUT THE NOTICE. THIS IS NOT AN OFFERING FOR SALE. ANY SUCH OFFERING CAN ONLY BE MADE BY WAY OF DISCLOSURE STATEMENT.



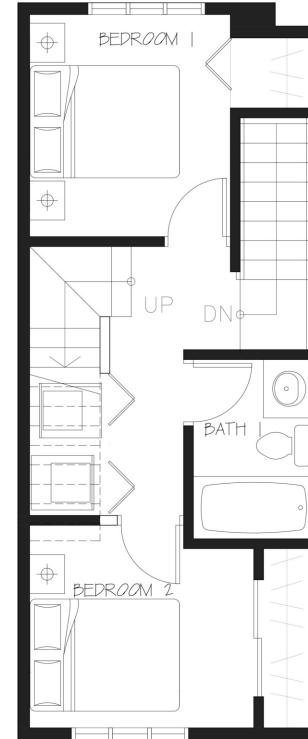
HIGHGATE HOMES
THE HEART OF HIGHGATE



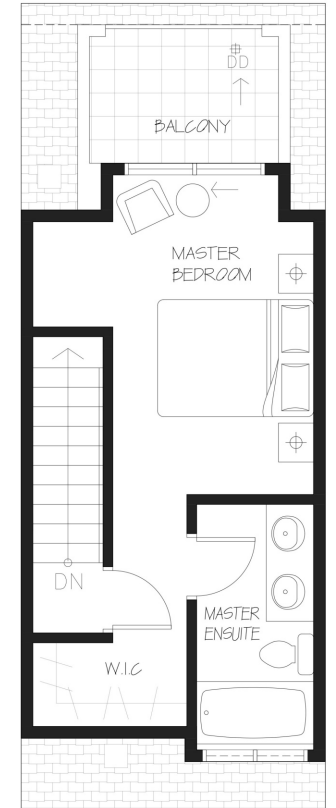
BASEMENT



FIRST FLOOR



SECOND FLOOR



THIRD FLOOR

TYPE

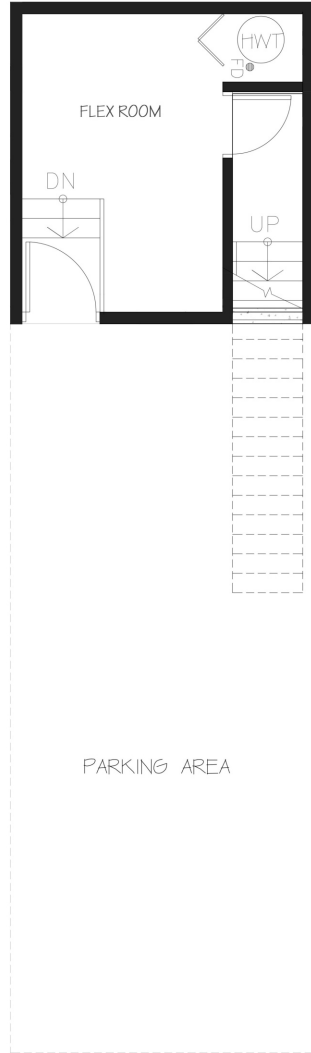
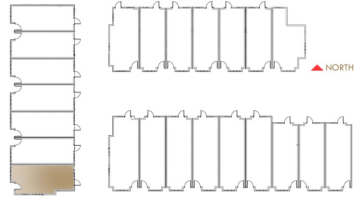
C₁

3 BEDROOM + 2.5 BATHROOM

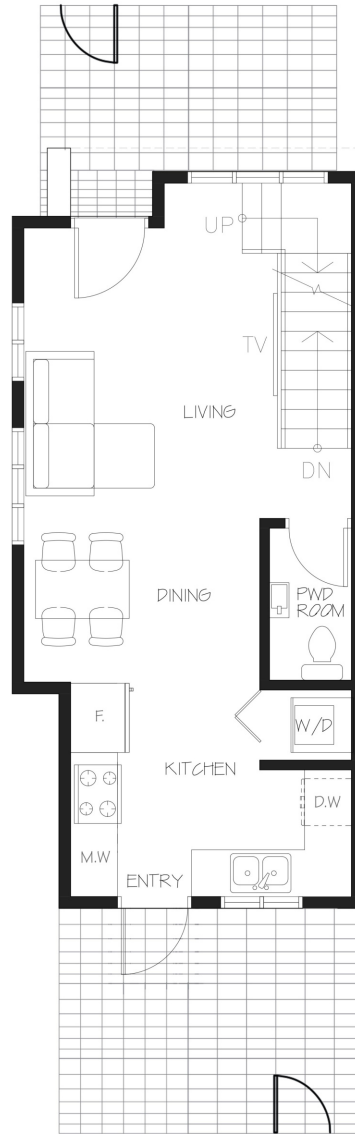
INDOOR : 1313 SQ.FT
OUTDOOR : 333 - 357 SQ.FT
TOTAL : 1646 - 1670 SQ.FT



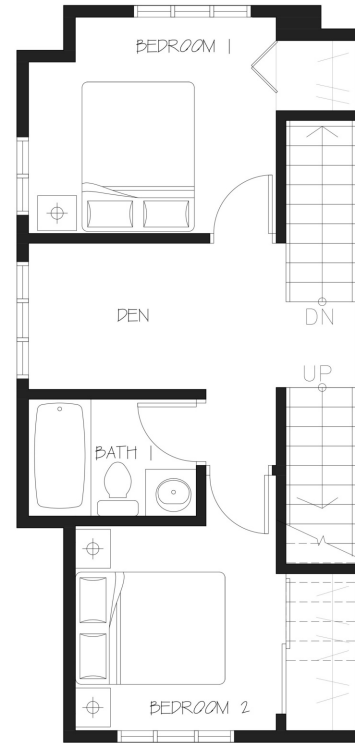
HIGHGATE HOMES
THE HEART OF HIGHGATE



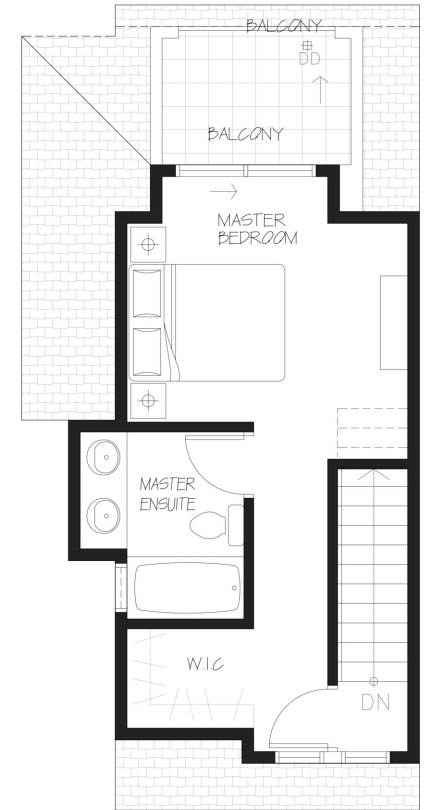
BASEMENT



FIRST FLOOR



SECOND FLOOR



THIRD FLOOR

TYPE

C₂

3 BEDROOM + DEN + 2.5 BATHROOM

INDOOR : 1403 SQ.FT
OUTDOOR : 357 SQ.FT
TOTAL : 1760 SQ.FT

DEVELOPER RESERVES THE RIGHT TO MAKE CHANGES AND MODIFICATIONS OR SUBSTITUTIONS TO THE BUILDING DESIGN, SIZES, AREAS, SPECIFICATIONS, LAYOUT, MATERIALS, AND PRICES WITHOUT THE NOTICE. THIS IS NOT AN OFFERING FOR SALE. ANY SUCH OFFERING CAN ONLY BE MADE BY WAY OF DISCLOSURE STATEMENT.